

Head Teachers' Information Pack

Contents

Sheet 2 - The Mobile Classroom

Sheet 3 - The Multimedia Presentation

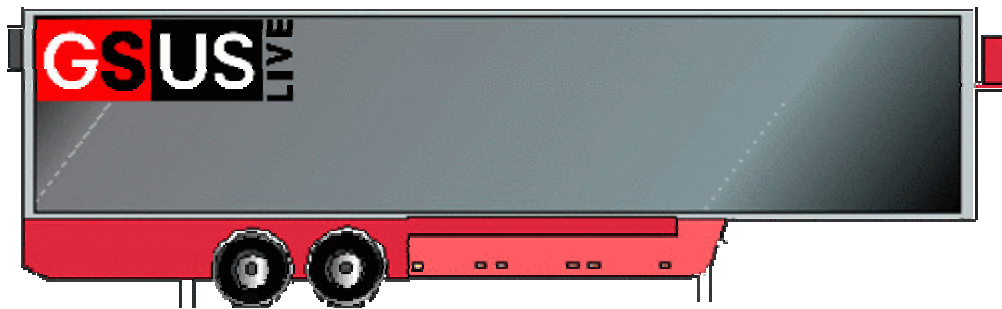
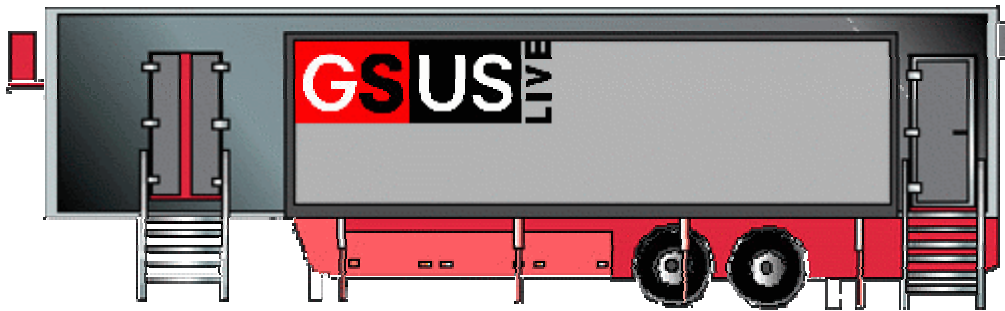
Sheet 4 - Interactive Programme Layout

Sheet 5 - Schedule of Presentation

Sheet 6 - Specifications

Sheet 7 - Booking Procedure

The Mobile Classroom



The Multimedia Presentation

Outline of Lesson

The presentation is in three parts and lasts about 45 minutes. As the students enter the Mobile Classroom, the sound and light system create an atmosphere of anticipation.

1. Introduction:

- An introductory 3D video introduces the themes of Forgiveness, Fear & Rejection. Special glasses are provided.
- A presenter gives brief instructions to help the students prepare for the Multimedia Programme.

2. Development (Multimedia Programme) also see sheet 4:

- The students, seated in pairs at a computer workstation, will choose a theme: Forgiveness, Fear or Rejection and then commence the Multimedia Programme. Students will only have time to investigate one theme.
- Each theme has four sections.
Each section is introduced by a short video clip, followed by a 'postcard' asking for help & advice.
Students then have several desktop resources available to help them formulate a response to each postcard. These resources are:
 - Extracts from the Bible - which is both seen and heard.
 - Quotations - in the form of a web page.
 - Contemporary Christian Music
 - Video extracts from 'The Miracle Maker' (an animated film on the life of Jesus).
- Students are then given five possible responses. Once a response has been made, students move on to the next section. With each section the story develops.

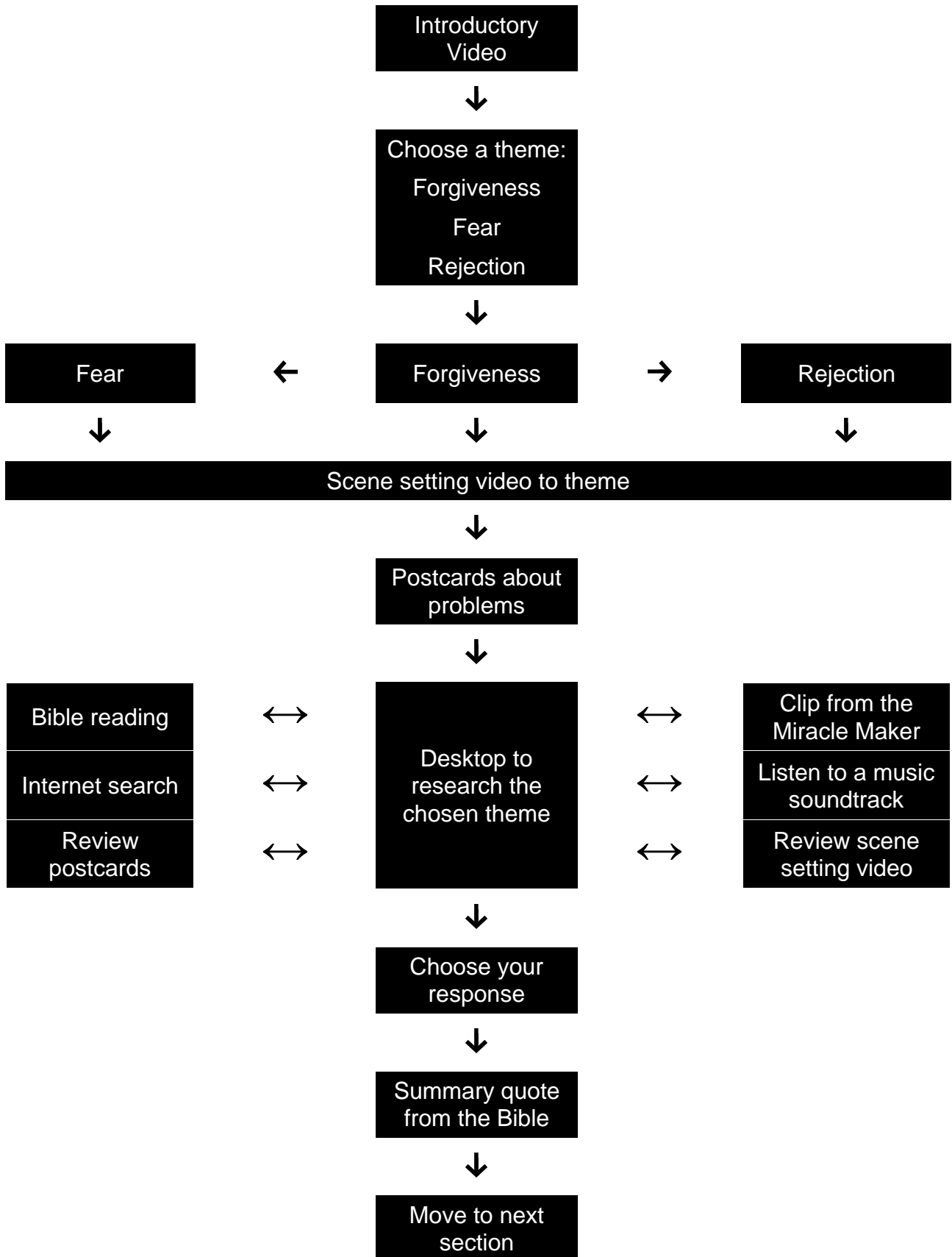
3. Final Plenary Review:

- At the end of the Multimedia Programme the students' responses are printed out for further work/reflection.
- The Presenter brings the lesson to a conclusion by seeing if there are key points students wish to make. The summary will be relevant to all three themes. Fuller feedback should be left to a subsequent lesson - see below.

Extension Work

We suggest that the time spent in the Mobile Classroom is the first of up to a four lesson process. More details are available in a specially prepared Teacher's Pack which includes worksheets and additional schemes of work.

Interactive Programme Layout



Schedule of Presentation

Set up time for Mobile Classroom 2 hours

Timing for presentation

Organising and arranging of students 5 mins

Introductory video 3 mins

Presenter introduction 3 mins

Multimedia - 4 sections 26 mins

Presenter conclusion 5 mins

Question and exit 3 mins

Presentation time in total 45 mins (approx.)

Maximum number of sessions per day 7 in total

Take down time for demonstrator vehicle 2 hours

Specifications of the Mobile Classroom

Dimensions

With the towing unit the total length is 16.5m.

The trailer is approximately 14.5m long.

The trailer width is 2.5m, but extends to 4.3m with the pod deployed.

The height is 4.1m.

The trailer will occupy 60sqm when it is parked with the pod open.

Weight

Trailer and tow unit approx. 21 tonnes

Trailer approx. 14 tonnes

Parking Surface

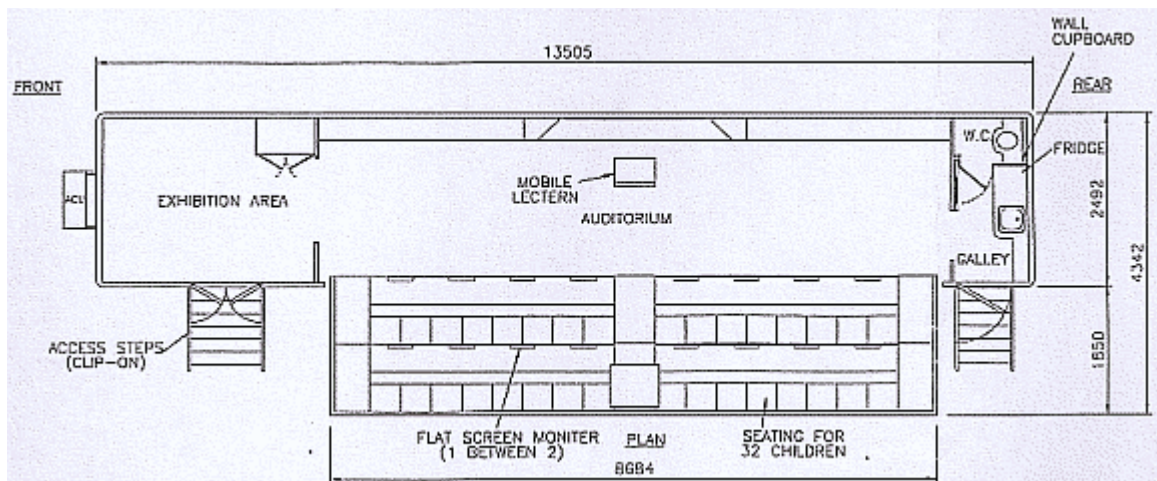
Hard standing is the ideal. The unit will be supplied with 'spreader plates' for grass or hard soil surfaces. The surface should be as flat as possible but if there is a slope the vehicle should be parked up the slope rather than across the slope.

Power

The power supply consists of a 230/250 volt single-phase current at 50Hz, standard supply in the UK. For full operation a 32amp capacity is required. However, if this is unavailable, the vehicle has its own generator.

Security/Safety

There is an alarm system covering the two doors. Any attempt at forced entry will activate a visual and audible alarm. There are detectors fitted that will set off the alarm if entry is gained, even normally, without switching off the alarm system. Any tampering with the battery pack for the alarm system will activate the alarm. The unit is fitted with smoke detectors and the appropriate fire extinguishers. The upholstery etc. is to NHS fire resistance standards. A full risk assessment was carried out during the commissioning of the Mobile Classroom and annual reviews are undertaken. The Mobile Classroom has a small medical kit. Disable access is provided by a chair lift.



Booking Procedure

- This pack should have been given to you by a local church representative – e.g. a church schools worker. Booking GSUS Live is made in cooperation with this person. Please give the completed booking form to the local church representative who will initiate the booking of GSUS Live.
- The local church representative will liaise with the Head Teacher and others in the school regarding dates, timetables etc.
- Part of the planning process includes a visit by the GSUS Live Schools' Coordinator to discuss siting, safety and security.

Insurance

The Mobile Classroom has its own insurance cover whilst on school premises, including Public Liability insurance.

Child Protection

Counties has its own, approved, Child Protection Policy and GSUS Live staff have undergone CRB checks. Local church representatives will be responsible for checking and approving all workers involved with the Mobile Classroom.